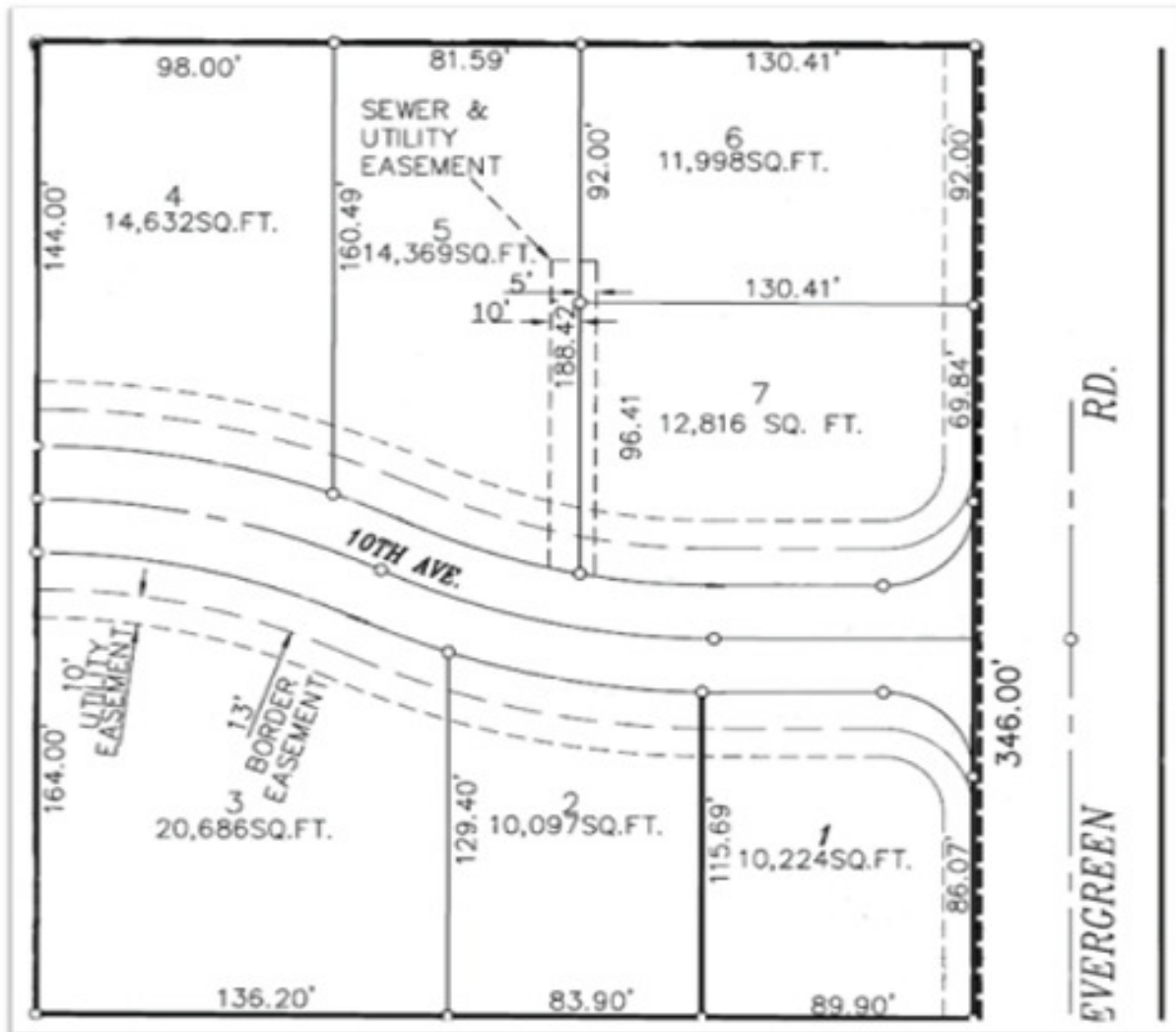




# C&S Construction of Spokane



- 6 buildable lots available
- All lots are oversized ranging from 10,000+ sqft-20,000+ sqft and large enough for shops.
- CV Schools
- Close freeway access and stores
- Front yard landscaping w/ sprinklers
- Sewer, Natural Gas
- C&S Construction homes include quality construction with wood trim, hickory cabinets, stainless appliances and nickel door hardware
- Prices start at 225K-380K

Contact Donlee Marlin  
 (509)710-4000  
 donlee@windermere.com

**Windermere**  
 Windermere Real Estate/Valley, Inc.

